

EFFECT OF POROUS SILICA AS A DRUG CARRIER ON THE RELEASE RATE OF NAPROXEN FROM EMULGEL

Ahmed Ismail, K. I. Saleh*, M.A. Ibrahim and S. Khalaf

Department of Pharmaceutics, Faculty of Pharmacy, Al-Azhar University, Assiut, Egypt

تم في هذا البحث تحميل النابروكسين على السيليكا ذات الفجوات بطريقة الترسيب من المذيب وتم دراسة تأثير هذه المادة على تبلور العقار من المخاليط الفيزيائية والمخاليط المحملة بطريقة تشتت الأشعة السينية والمسح الحراري التفاضلي؛ وقد أوضحت نتائج التحليل بأن النابروكسين قد تحول من الصورة البلورية إلى الصورة الغير بلورية عند تحميله على السيليكا معتمدا على نسبة العقار الى السيليكا. وقد أعطت المخاليط المحملة معدل تحلل للعقار أعلى من المخاليط الفيزيائية أو العقار نفسه منفردا وأعلى معدل انطلاق تم الحصول عليه من المخلوطة المحمل والمحتوى على نسبة عقار: (:) وهو الذي تم اختياره في تحضير المستحلبات الهلامية. وقد تم صياغة هذا المخلوطة المحمل في صورة مستحلبات هلامية مختلفة باستخدام أكثر من نوع من القواعد الهلامية وقد تم دراسة معدل انطلاق العقار من هذه المستحضرات مقارنة ببعضها البعض حيث أن أعلى معدل انطلاق دوائى تم الحصول عليه من المستحضرات الهلامية المحتوية على المخلوطة المحمل من العقار والسيليكا مقارنة بالمخاليط الفيزيائية أو العقار منفردا. كما أن أعلى معدل انطلاق دوائى تم الحصول عليه من المستحلب الهلامي المحضر من الجينات الصوديوم.

Naproxen was loaded on Florite R (porous silica) by solvent deposition technique. The physical and loaded drug mixtures were examined by x-ray diffractometry and differential scanning calorimetry (DSC). The in-vitro dissolution of the drug from loaded and physical mixture was studied. The best formula which contains (1:2) drug:adsorbent ratio was formulated into emulgel using different gelling agents. The in-vitro release of naproxen from the selected emulgel bases was carried out. X-ray and DSC results revealed that the drug was changed from the crystalline to amorphous state depending on drug to carrier ratio since the complete transformation was obtained from the loaded mixture containing (1:2) drug:Florite R ratio. Transformation of the drug to the amorphous state in the loaded mixture led to an enhancement of both drug dissolution and in-vitro release rates.

Received in 6/3/2006 & Accepted in 5/7/2006

*Corresponding author

INTRODUCTION

Naproxen is a candidate of non steroidal anti-inflammatory drug which is used in the treatment of arthritis and various inflammatory disorders.¹ It is practically water insoluble,² resulting in poor absorption. The dissolution rate of the drug is influenced by its physical state, including polymorphism, hydrate or solvate formation and also the degree of crystallinity.³

Numerous attempts⁴⁻⁶ have been made to improve the dissolution rate of poorly water-soluble drugs. Surface adsorption is one of the methods used to reduce the drug particle size by increasing the surface area available to the dissolution medium.⁷ The technique of surface adsorption was first reported by Mankhouse and Lach. Recently, this technique has been employed to improve the dissolution characteristics of certain drugs.^{8&9}

Porous silica gel or porous calcium silicate, which called Florite R is hydrophilic adsorbent of globular structure.¹⁰ Porous calcium silicate is widely used as a drug carrier in various pharmaceutical preparations for its excellent flowability, mouldability, drug stabilization and release characters.^{11&12} The use of colloidal and porous silica has recently attracted considerable attention in the pharmaceutical field of stability, enhancement of dissolution and bio-availability.¹³

The aim of the present study was to evaluate the effect of porous silica as a drug carrier on the physico-

chemical properties and the dissolution rate of naproxen. Another goal of this work is to prepare naproxen emulgel and evaluate the effect of porous silica on the in vitro release rate of the drug from the emulgel bases.

EXPERIMENTAL

Materials

Naproxen (kindly provided by Misr Pharmaceutical Co., Egypt); Porous calcium silicate (Tokuyama Soda, Tokyo, Japan) was used after drying in vacuum at 120° for 3 hr; Standard cellophane membrane of molecular cut range 12000 (Sigma Chem. Co., USA); Hydroxypropyl-methylcellulose (HPMC), (Aldrich Chem. Co., Inc., USA); Methylcellulose (MC), (BDH Chemical LTD, Poole Englad); Carboxymethylcellulose, Sodium alginate and Castor oil (El-Nasr Pharm. Chem. Co., Cairo, Egypt). All other materials were of analytical grade.

Equipment

Double beam spectrophotometer, UV-1601 (Shimadzu Co., Japan); Vibrational sieve shaker, RX-86-1 (Cole Pulmer Instrument Co., USA); X-ray diffractometer (Philips Co., 1710 Netherland); Differential scanning calorimeter, DSC-50, equipprd with a computerized data station (Shimadzu Co., Japan); Dissolution test apparatus, SR II, 6 flask (Hanson Research Co., USA); Vacuum oven drier, STP-200 (Zeamil Horyzont Co., Poland); Thermo-statically controlled shaking water

bath (Kotterman Labortechnik GmbH, Germany); Homogenizer (Mechanika Precyzyna- MPN-09, Poland); pH meter Ama digital (Ama Co., Germany).

Methods

Preparation of naproxen physical mixtures

Naproxen, which had a particle size of 125-200 μm and dried porous silica (Florite R) were mixed in various ratios (1:0.5, 1:1 and 1:2 drug to Florite R ratios) using mortar and pestle in dark and dry conditions to avoid oxidation of the drug. Mixing was done gently for five minutes avoiding any grinding effect on the mixture.

Preparation of naproxen loaded adsorbates

The loaded mixtures of naproxen using different carriers were prepared by solvent deposition method. The calculated amount of Florite R was added to the methanolic solution of naproxen to give the desired drug: adsorbent ratios. Adsorbate systems containing 1:0.5, 1:1 and 1:2 w/w drug: adsorbent ratios were prepared. Methanol was evaporated at room temperature and its complete removal was carried out over anhydrous calcium chloride up to constant weight. The samples were then scrapped and the particle size of each prepared mixture was reduced to the initial size of the used adsorbents and then assayed for their drug content. Only those samples containing $100 \pm 5\%$ of naproxen were used for further studies.

Physicochemical characterization of the prepared loaded and physical mixtures

Powder X-ray diffraction studies

The x-ray diffraction patterns for different samples with particle size range (125-200) μm were determined using the Philips 1710 automated diffractometer. The relation was provided by $\text{CuK}\alpha$ radiation operating at 40 KV and current of 30 mA ($\lambda\text{K}\alpha = 1.5418 \text{ \AA}$). The system was calibrated using standard polycrystalline silicon. The differential patterns were achieved using continuous scan mode with 2θ ranging from 4° to 60° . The output data achieved were represented by 2θ , $d \text{ \AA}$, intensities were determined via the microprocessor of the PW / 1710.

Differential scanning calorimetry (DSC)

The DSC thermograms were recorded on a Schimadzu DSC-50 calorimeter with samples weight (about 5 mg). The procedure involves heating the sample contained in an aluminum pan and a similar empty reference pan at a predetermined temperature range. The samples were scanned at scanning rate of $10^\circ/\text{min}$ up to 200° under dry nitrogen stream at flow rate of 40 ml/min.

In-vitro dissolution studies

The dissolution rate of naproxen from its loaded and physical mixtures as well as the untreated drug was studied using USP dissolution apparatus. Accurately weighed amount equivalent to 40 mg of the

drug was dispersed on the medium (500 ml citrate buffer, pH 5.03 at $37 \pm 0.2^\circ$), which was immediately stirred at 60 rpm. At appropriate time intervals (after 5, 10, 15, 30, 45, 60, 75 and 90 min.) 5 ml sample was withdrawn by a pipette fitted with a cotton plug at its terminal end. The sample was diluted to a suitable volume with a buffer solution and the absorbance was measured spectrophotometrically at 271 nm. Equal volume of fresh dissolution medium, prewarmed at 37° , was added to the dissolution medium so as to keep the volume of the dissolution medium constant. The cumulative amount of the drug dissolved during the n^{th} sample was calculated.

Formulation of naproxen adsorbate as emulgel

Preparation of emulgels

Emulgels used in the present study were o/w emulsions, composed of vegetable oil emulsified in aqueous medium with the aid of synthetic emulsifier such as tween[®] and then mixed with a gelling agent to obtain creamy consistency.

One gram of naproxen or its equivalent from adsorbate containing (1:2) drug to Florite R ratio was dissolved in the oil phase and mixed thoroughly with water (10 ml) and tween 60[®] as emulsifying agent. A gelling agent was allowed to swell in the remaining water. A drug-loaded emulsion was gelled with a preswollen gel and then was treated with a homogenizer for 5 minutes till a homogenous emulgel is obtained.¹⁴

Table 1, illustrates the composition of the tested emulgel bases.

Table 1: Composition of emulgel bases.

Component	Concentration (% w/w)			
	I	II	III	IV
Castor oil	20	20	20	20
Tween 60 [®]	2	2	2	2
Na-CMC	2	---	---	---
HPMC	---	2.5	---	---
MC	---	---	5	---
Na-alginate	---	---	---	5
Dist. water	76	75.5	73	73

In-vitro release of naproxen from the prepared emulgel formulations

From the previous studies in the preformulation part, the results revealed that the base containing 1:2 w/w drug to Florite R ratio showed the highest dissolution rate. On the other hand, DSC and x-ray studies confirmed the transformation of naproxen from crystalline to amorphous state in this ratio. Hence, this base was selected in order to study the release of naproxen from the emulgel formulations.

One gram from each emulgel formulation containing 10 mg pure drug was placed on a semi permeable cellulosic cellophane membrane previously soaked in distilled water for 24 hrs. The loaded membrane with the sample of emulgel was stretched over one end of an open glass tube (6.63 cm² area).

The membrane was clipped tightly over the tube end by means of a

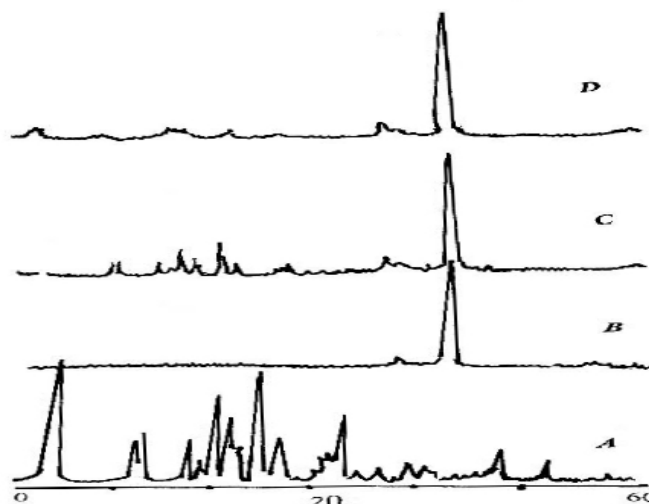


Fig. 2: X-ray diffraction patterns of (1:2) naproxen /Florite R systems, where:

A- Plain drug B- Florite R
 C- Physical mixture and D- Adsorbate

Differential scanning calorimetry has been used for characterizing the state of the drug and studying its interaction with carriers.^{15&16} Fig. 3, illustrated DSC thermograms of naproxen and its physical mixtures as well as the adsorbates with Florite R in both 1:1 and 1:2 w/w drug: adsorbent ratios. Naproxen showed an endothermic peak at 156° due to melting of drug crystals (Fig. 3, trace A), but the DSC curve of Florite R is characterized by absence of peaks within the temperature range

employed (Fig. 3, trace B). The thermograms of physical mixtures and (1:1) loaded mixture showed the same drug characteristic peak but with low intensity and a little shift to lower degree of temperature.

In case of the loaded mixture of 1:2 w/w drug: Florite R ratio, the DSC curve showed no endothermic peak at the melting region of drug crystals and this confirms the presence of the drug in the amorphous state at this ratio (Fig. 3, trace F)

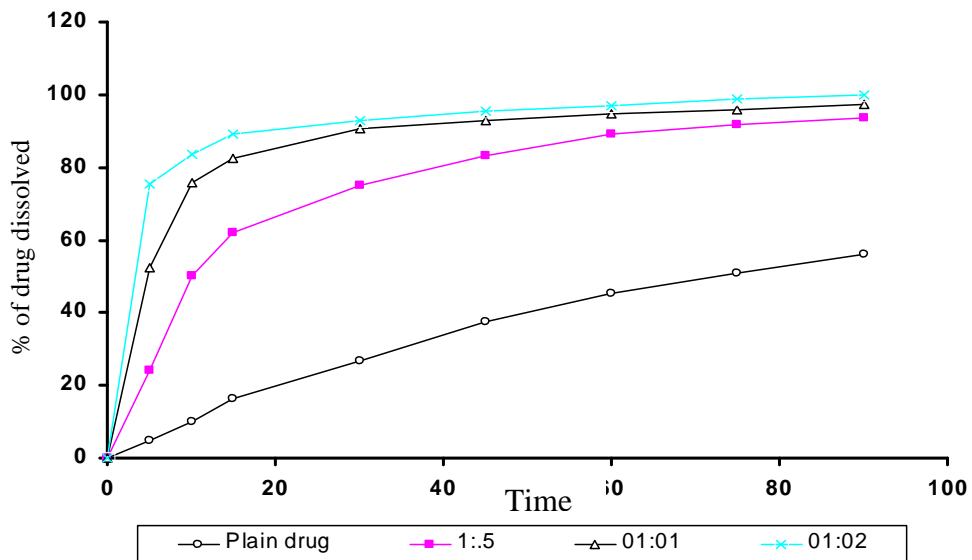


Fig. 4: Dissolution profiles of naproxen from physical mixtures with Florite R containing different drug: Florite R (w/w) ratios.

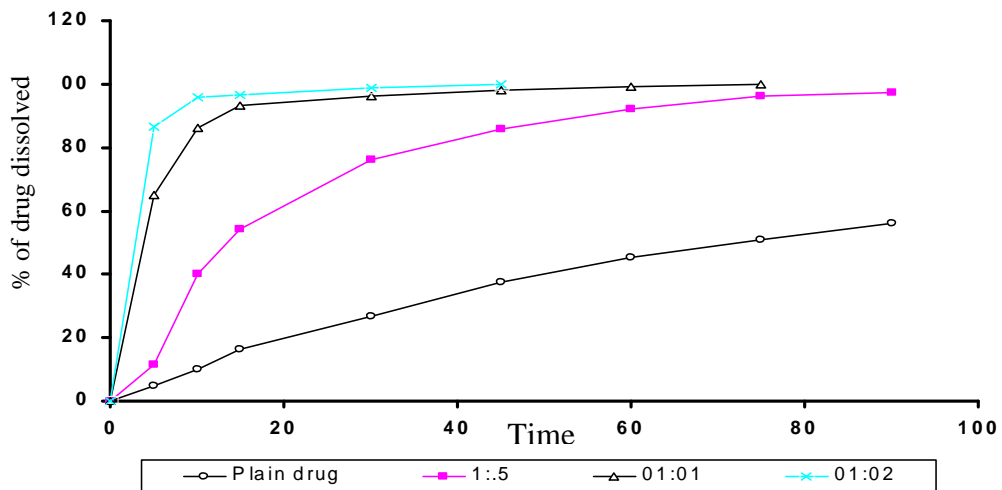


Fig. 5: Dissolution profiles of naproxen from adsorbates with Florite R containing different drug: Florite R (w/w) ratios.

The *in-vitro* release of naproxen from emulgels containing different gelling agents are illustrated in Figs. (6-9).

From the obtained results, it is so clear that sodium alginate gave the highest amount of released drug compared to other investigated gelling agents. The highest amount of released drug was obtained from sodium alginate and this may be due to the presence of sodium ion (Na^+), which converted naproxen into its sodium salt and subsequently gave higher drug solubility in the receiving medium ($\text{pH} = 5.03$). This result is in a good agreement with that obtained by Atia.¹⁸ The difference in drug release between Sodium-alginate and Sodium-CMC emulgels may be attributed to the higher viscosity of Sodium-CMC.

The release data of naproxen from MC and HPMC emulgel bases are graphically illustrated in Figures 8 and 9 respectively, it is obvious that, the release of drug from HPMC is higher than that from MC and both more less than that obtained in case of sodium-alginate. The decrease in the amount of drug released from MC and HPMC may be attributed to the fact that, those bases are non-ionic¹⁹ and the drug will be in the free acid form which is less soluble in the receiving medium; $\text{pH} = 5.03$.

From the previous results it can be concluded that the extent of naproxen released from different investigated emulgel bases can be arranged in a descending order as follows:

Sodium-alginate > HPMC > sodium - CMC > MC

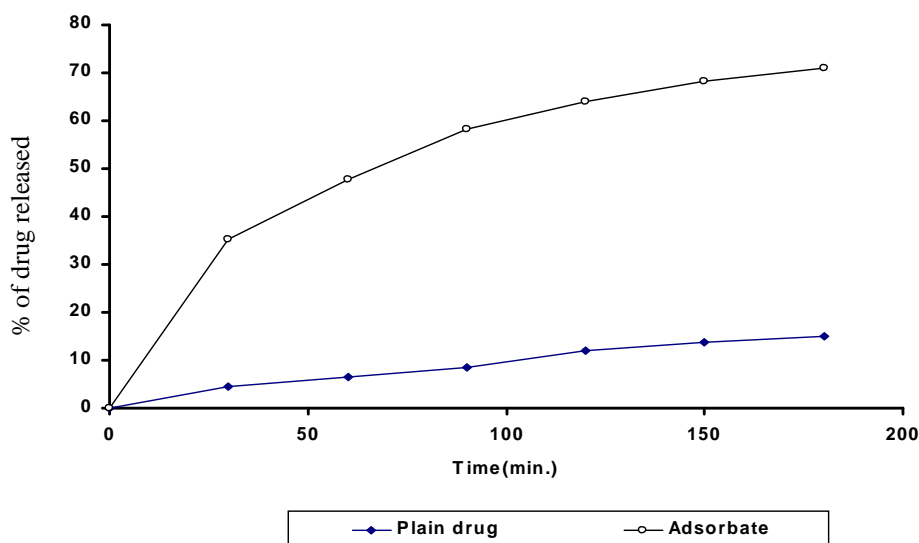


Fig. 6: Release profiles of naproxen from sodium alginate emulgel base (5%).

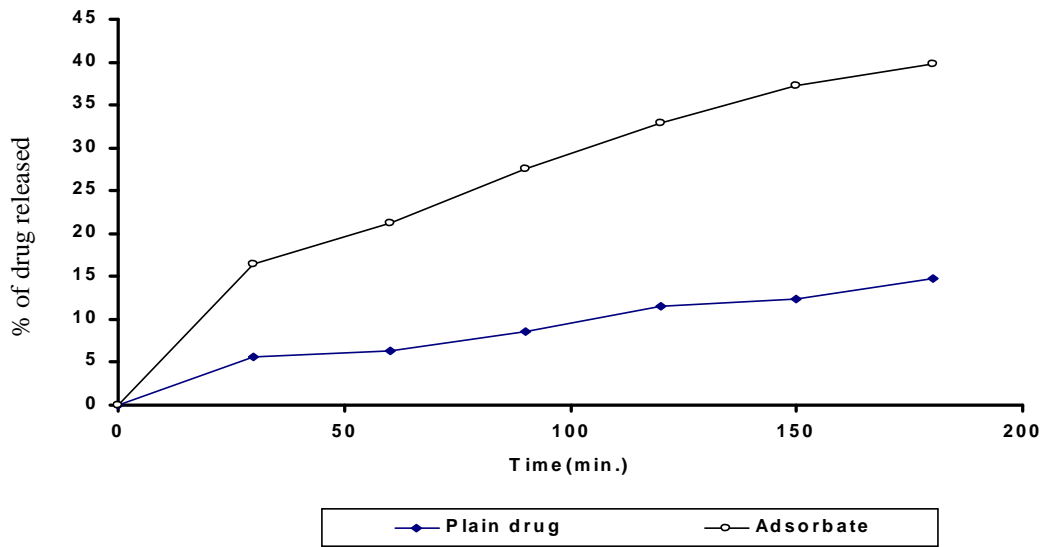


Fig. 7: Release profiles of naproxen from sodium CMC emulgel base (2%).

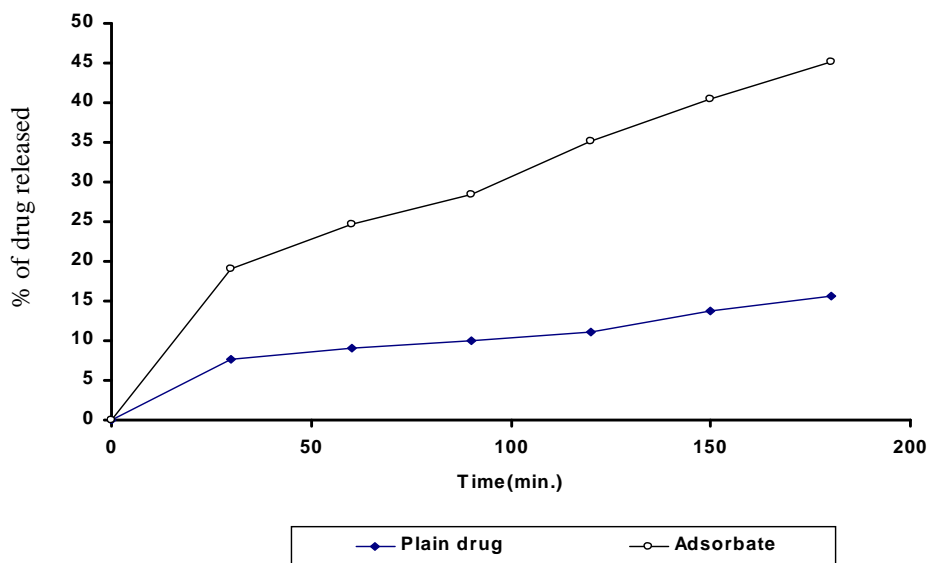


Fig. 8: Release profiles of naproxen from MC emulgel base (5%).

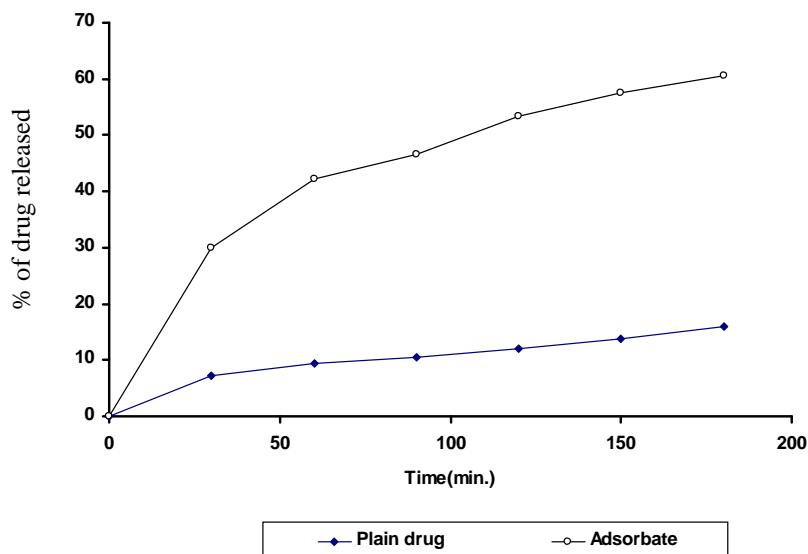


Fig. 9: Release profiles of naproxen from HPMC emulgel base (2.5%).

Conclusion

From the obtained results it could be concluded that the release rate of naproxen from emulgel containing loaded mixtures was higher than that prepared using the plain drug. Also, the drug exhibited the highest release rate from the emulgel prepared by Na-alginate as compared to other gelling agents.

REFERENCES

- 1- Martinadale "The Extrapharmacopoeia" 33th Ed. The Pharmaceutical Press, London, 2002, pp. 60-61.
- 2- "U. S. Pharmacopoeia" The national Formulary, 25th Ed. NF 20, 2002, pp. 1191-1194.
- 3- T. Sato, A. Okada, K. Sekiguchi and Y. Tsuda, *Chem. Pharm. Bull.*, 29, 2675 (1981).
- 4- H. Krasowska, *II Farmaco*, 31, 463 (1976).
- 5- H. Krasowska, *Int. J. Pharm.*, 7, 137 (1980).
- 6- T. Konno, *Chem. Pharm. Bull.*, 38, 2003 (1990).
- 7- S. M. Alsaidan, A. A. Alsughayer, and A. G. Eshra, *Drug Dev. Ind. Pharm.*, 24, 389 (1998).
- 8- A. Shaker, *Bull. Pharm. Sci., Assiut University*, 20, 1 (1997).
- 9- Y. Shu-Yang, C. Chun-Ren, L. Ming-Tao and C. Li-Chen, *Drug Dev. Ind. Pharm.*, 23, 313 (1997).
- 10- R. K. Her, "The Chemistry of Silica", John Wiley, NY, USA, 1979, pp. 253-256 .

- 11- S. M. Safwat, A. S. Ali, M. O. Ahmed and I. Abdel-Sabour, Bull. Pharm. Sci., Assiut University, 17, 139 (1994).
- 12- H.Y. Abdallah, N. Khalafalla, S.A. Khalil, Drug Dev. Ind. Pharm., 9, 795 (1983).
- 13- A. M. El-sayed, A. A. Shaker and A. A. Assi, STP Pharma Sci., 3, 319 (1993).
- 14- D. I. Friedman, J. S. Schwarz and M. Weisspapier, J. Pharm. Sci., 3, 84 (1995).
- 15- R. Nair, S. Gonen and S. W. Hoag, Int. J. Pharm., 240, 11 (2002).
- 16- M. Yoshioka, B. C. Hancock and G. Zografi, J. Pharm. Sci., 84, 983 (1995).
- 17- F. Carli, I. Colmbo, L. Magarotto and A. M.otto, 4th Pharm. Technol. Conf., Edimb., V.K., (1984).
- 18- G. F. Atia, Master Thesis, Faculty of Pharmacy Zagazig University (1999).
- 19- C. M. Klech, "Gel and Gellies" in "Encyclopedia of Pharmaceutical Technology" J. Swarbrick and J. C. Boylan, Eds., Marcel Dekker, Inc., USA, Vol. 6 (1988).